



# MERIT

**PIPE SUPPORT SYSTEMS.**

- **SPRINKLER CLAMPS**
- **PIPE CLAMPS**
- **RELATED PRODUCTS**

**“ STEP UP IN TECHNOLOGY, STEP DOWN IN COST ”**



#### Threaded Rods DIN 975/ASTM B7

Part No.	Size
MTR006	6mm
MTR008	8mm
MTR010	10mm
MTR012	12mm
MTR016	16mm



#### Hex Nuts ASTM A 194-Gr2H -DIN 934

Part No.	Size
MHN006	6mm
MHN008	8mm
MHN010	10mm
MHN012	12mm
MHN016	16mm



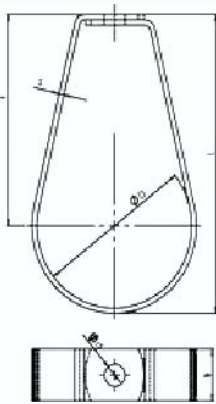
#### Flat Washers DIN 125A OR EQL

Part No.	Size
MRW006	6mm
MRW008	8mm
MRW010	10mm
MRW012	12mm
MRW016	16mm



Sprinkler Type Clamp

Product detail:



Specifications:

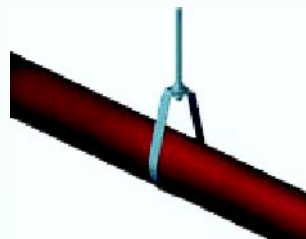
Used for freely hanging of horizontal pipe lines

Used for sprinkler system installations

Used for fire extinguishing systems

Height adjustment through threaded rods

Electro galvanized for corrosion resistance (Plating thickness 8-10 micron)



CODE	SIZE	φD	E	L	S*B	M/φd
M55028	3/4"	30	54.5	71	1.5*25	M10.5
M55035	1"	36	63.5	83	1.5*25	M10.5
M55040	1 1/4"	46	70.5	95	1.5*25	M10.5
M55048	1 1/2"	52	75.5	103	1.5*25	M10.5
M55060	2"	66	83.5	118	1.5*25	M10.5
M55075	2 1/2"	78	100.5	142	2.5*25	M10.5
M55090	3"	92	117.5	166	2.5*25	M10.5
M550115	4"	116	143.5	204	2.5*25	M10.5
M550140	5"	142	175	249	3.0*25	M13
M550160	6"	170	196	284	3.0*25	M13
M550200	8"	222	262	376	3.0*40	M17
M550250	10"	275	357.5	498	3.0*40	M17

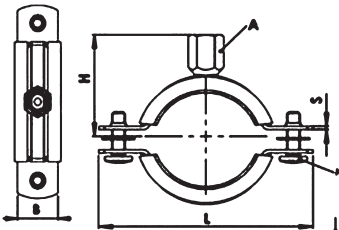


M8+M10 Combination Nut Welded - with Rubber Inlay

#### Specifications:

- Used for mounting of pipes to the walls ( vertical / horizontal ) , ceilings and floors
- Hanging type is M8 / M10 combination nut
- EPDM lining for ;
  - noise reduction level up to 15 dB according to DIN 4109
  - vibration reduction
  - partial compensation of thermal expansion
- Easy and safe assembly through combination side screws.
- Side screws are protected against loss during assemble with the help of plastic washers.
- Electro galvanized for corrosion resistance (Plating thickness 8-10 micron).

Product detail:



CODE	SIZE	φD	L	H	S*B	M	A
M42AWR-18	3/8"	15-19	59	31.5	1.5*20	M6	M8+M10
M42AWR-22	1/2"	20-25	64	34	1.5*20	M6	M8+M10
M42AWR-28	3/4"	26-30	70	36.5	1.5*20	M6	M8+M10
M42AWR-35	1"	32-36	77	39.5	1.5*20	M6	M8+M10
M42AWR-40	1 1/4"	38-43	82	42.5	1.5*20	M6	M8+M10
M42AWR-48	1 1/2"	47-51	91	47	1.5*20	M6	M8+M10
M42AWR-54	-	53-58	97	50	1.5*20	M6	M8+M10
M42AWR-60	2"	60-64	103	53	1.5*20	M6	M8+M10
M42AWR-70	-	68-72	112	57.5	1.5*20	M6	M8+M10
M42AWR-75	2 1/2"	75-80	119	61	2*20	M6	M8+M10
M42AWR-83	-	81-86	125	64.3	2*20	M6	M8+M10
M42AWR-90	3"	87-92	132	67.3	2*25	M6	M8+M10
M42AWR-100	3 1/2"	99-105	143	73.3	2*25	M6	M8+M10
M42AWR-110	-	107-112	152	77.3	2*25	M6	M8+M10
M42AWR-115	4"	113-118	158	80.3	2.5*25	M6	M8+M10
M42AWR-125	-	125-130	169	86.3	2.5*25	M6	M8+M10
M42AWR-140	5"	138-142	183	92.8	2.5*25	M6	M8+M10
M42AWR-160	6"	159-166	204	103.3	3*25	M6	M8+M10
M42AWR-200	8"	200-212	244	123.3	3*25	M6	M8+M10
M42AWR-250		248-250	292	147.8	3*25	M6	M8+M10

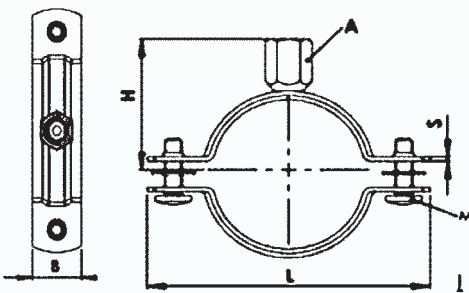
#### Similar products:

- M8+M10 Combination Nut Welded-Without Rubber Inlay



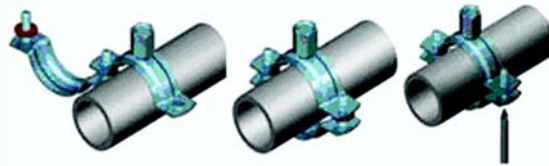
M8+M10 Combination Nut Welded - without Rubber Inlay

Product detail:



#### Specifications:

- Used for mounting of pipes to the walls ( vertical / horizontal ) , ceilings and floors
- Hanging type is M8 / M10 combination nut
- Easy and safe assembly through combination side screws.
- Side screws are protected against loss during assemble with the help of plastic washers.
- Electro galvanized for corrosion resistance (Plating thickness 8-10 micron).



CODE	SIZE	φD	L	H	S*B	M	A
M42ANR-18	3/8"	15-19	53	28.5	1.5*20	M6	M8+M10
M42ANR-22	1/2"	20-25	59	31.5	1.5*20	M6	M8+M10
M42ANR-28	3/4"	26-30	64	34	1.5*20	M6	M8+M10
M42ANR-35	1"	32-36	70	37.5	1.5*20	M6	M8+M10
M42ANR-40	1 1/4"	38-43	77	39.5	1.5*20	M6	M8+M10
M42ANR-48	1 1/2"	47-51	85	44.5	1.5*20	M6	M8+M10
M42ANR-54	-	53-58	92	47.5	1.5*20	M6	M8+M10
M42ANR-60	2"	60-64	98	51	1.5*20	M6	M8+M10
M42ANR-70	-	68-72	106	55	1.5*20	M6	M8+M10
M42ANR-75	2 1/2"	75-80	114	58.5	2*25	M6	M8+M10
M42ANR-83		81-86	120	61.8	2*25	M6	M8+M10
M42ANR-90	3"	87-92	126	64.8	2*25	M6	M8+M10
M42ANR-100	3 1/2"	99-105	138	70.8	2*25	M6	M8+M10
M42ANR-110		107-112	147	74.8	2*25	M6	M8+M10
M42ANR-115	4"	113-118	153	77.8	2.5*25	M6	M8+M10
M42ANR-125		125-130	164	83.3	2.5*25	M6	M8+M10
M42ANR-140	5"	138-142	177	89.8	2.5*25	M6	M8+M10
M42ANR-160	6"	159-166	199	100.8	3*25	M6	M8+M10
M42ANR-200	8"	199-205	238	120.8	3*25	M6	M8+M10

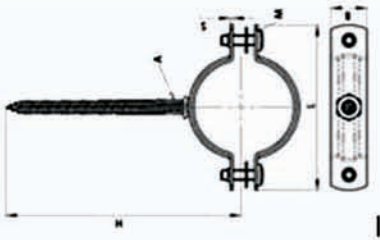
#### Similar products:

- M8+M10 Combination Nut Welded-With Rubber Inlay



With Nail-with Rubber Inlay

Product detail:



### Specifications:

- Used for mounting of pipes to the walls ( vertical / horizontal ) , ceilings and floors
- Hanging type is by Nail
- EPDM lining for ;
  - noise reduction level up to 15 dB according to DIN 4109
  - vibration reduction
  - partial compensation of thermal expansion
- Easy and safe assembly through combination side screws.
- Side screws are protected against loss during assemble with the help of plastic washers.
- Electro galvanized for corrosion resistance (Plating thickness 8-10 micron).



CODE	SIZE	φD	L	H	S*B	M
M44AWR-28	3/4"	26-30	68.5	31	1.5*20	M6*20
M44AWR-35	1"	32-36	76	34.5	1.5*20	M6*20
M44AWR-40	1 1/4"	38-43	91.5	39	1.5*20	M6*20
M44AWR-48	1 1/2"	47-51	99	42.5	1.5*20	M6*20
M44AWR-60	2"	60-64	112	49	1.5*20	M6*20
M44AWR-75	2 1/2"	75-82	134	58	1.5*20	M6*20
M44AWR-90	3"	87-92	146.5	63.5	1.8*20	M6*20
M44AWR-115	4"	113-118	173	77	1.8*20	M6*20
M44AWR-140	5"	138-142	199	90	1.8*20	M6*20
M44AWR-160	6"	159-166	227	102.5	1.8*20	M6*20

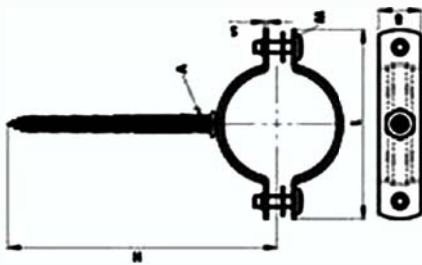
### Similar products:

- With Nail-without Rubber Inlay



With Nail-without Rubber Inlay

Product detail:



### Specifications:

- Used for mounting of pipes to the walls (vertical / horizontal) , ceilings and floors
- Hanging type is by Nail
- Easy and safe assembly through combination side screws.
- Side screws are protected against loss during assemble with the help of plastic washers.
- Electro galvanized for corrosion resistance (Plating thickness 8-10 micron).



CODE	SIZE	φD	L	H	S*B	M
M44BNR-18	3/8"	15-19	53	88.5	1.5*20	M6*20
M44BNR-22	1/2"	20-25	59	91.5	1.5*20	M6*20
M44BNR-28	3/4"	26-30	64	94	1.5*20	M6*20
M44BNR-35	1"	32-36	70	97.5	1.5*20	M6*20
M44BNR-40	1 1/4"	38-43	77	99.5	1.5*20	M6*20
M44BNR-48	1 1/2"	47-51	85	104.5	1.5*20	M6*20
M44BNR-54	-	53-58	92	107.5	1.5*20	M6*20
M44BNR-60	2"	60-64	98	111	1.5*20	M6*20
M44BNR-70	-	68-72	106	115	1.5*20	M6*20
M44BNR-75	2 1/2"	75-80	114	118.5	1.5*20	M6*20
M44BNR-83		81-86	120	121.8	1.8*20	M6*20
M44BNR-90	3"	87-92	126	124.8	1.8*20	M6*20
M44BNR-100	3 1/2"	99-105	138	130.8	1.8*20	M6*20
M44BNR-110		107-112	147	154.8	1.8*20	M6*20
M44BNR-115	4"	113-118	153	157.8	1.8*20	M6*20
M44BNR-125		125-130	164	163.3	1.8*20	M6*20
M44BNR-140	5"	138-142	177	169.8	1.8*20	M6*20
M44BNR-160	6"	159-166	199	180.8	1.8*20	M6*20
M44BNR-200	8"	199-205	238	200.8	1.8*20	M6*20

### Similar products:

- With Nail-without Rubber Inlay

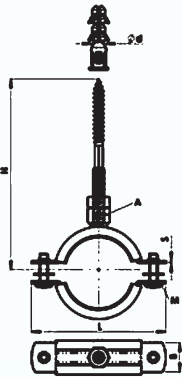


Set with Hanger Bolt-with Rubber Inlay



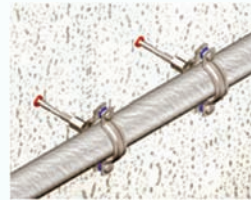
Set with Hanger Bolt-without Rubber Inlay

Product detail:



### Specifications:

- Used for mounting of pipes to the walls (vertical/horizontal) ceilings and floors.
- Plastic anchor should be used for fixing.
- EPDM lining for;
  - Noise reduction up to 15dB level according to DIN 4109
  - Vibration Reduction
  - Partial compensation of thermal expansion.
- Easy and safe assembly through Combination side screws
- Side screws are protected against loss during assembly and delivery with the help of plastic washers.
- Electrogalvanized for corrosion protection(8-10 Microns).



CODE	SIZE	Range	L	H	S*B	M	A
M45WR-18	3/8"	15-19	61	93.5	1.5*20	M6	M8
M45WR-22	1/2"	20-25	63	94	1.5*20	M6	M8
M45WR-28	3/4"	26-30	69	96	1.5*20	M6	M8
M45WR-35	1"	32-36	79	101	1.5*20	M6	M8
M45WR-40	1 1/4"	38-43	84	103.5	1.5*20	M6	M8
M45WR-48	1 1/2"	47-51	92	107	1.5*20	M6	M8
M45WR-60	2"	60-64	105	113.5	1.5*20	M6	M8
M45WR-75	2 1/2"	75-80	118	119.5	1.5*20	M6	M8
M45WR-90	3"	87-92	133	125.5	1.5*20	M6	M8
M45WR-100	3 1/2"	99-105	143	132.5	1.5*20	M6	M8
M45WR-115	4"	113-118	158	158	2.5*25	M6	M8+M10
M45WR-140	5"	138-142	182	171.5	2.5*25	M6	M8+M10
M45WR-160	6"	159-166	205	183.5	2.5*25	M6	M8+M10
M45WR-220	8"	215-220	243	202.5	2.5*25	M6	M8+M10

### Similar products:

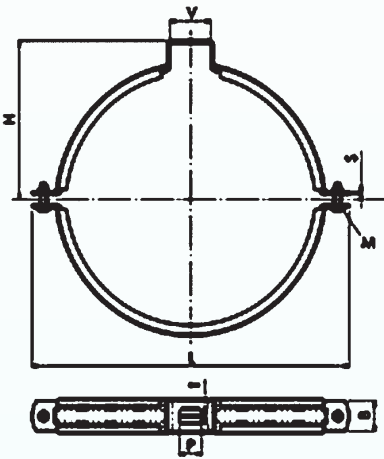
- WITH NUT, TAPPING SCREW, NLYON PLUG, NO RUBBER INLAY
- Set with Hanger Bolt-without Rubber Inlay





PVC Clamp

Product detail:



#### Specifications:

- Used for mounting of PVC pipes to the walls ( vertical / horizontal ), ceilings and floors
- Side screws are protected against loss during assembly and delivery by a plastic washer.
- EPDM lining for;
  - Noise reduction up to 15dB level according to DIN 4109
  - Vibration Reduction
  - Partial compensation of thermal expansion.
- Easy and safe assembly through Combination side screws
- Electrogalvanized for corrosion protection(8-10 Microns)



CODE	SIZE	φD	L	H	T*P	S*B	M
M73WR-50	50mm	48-53	92	41	9*18	1.5*20	M6
M73WR-75	75mm	74-80	119	54	9*18	2.0*25	M6
M73WR-100	100mm	99-108	145	66.5	9*18	2.5*25	M6
M73WR-125	125mm	120-128	165	77	12.5*20	2.5*25	M6
M73WR-150	150mm	149-161	200	91.5	12.5*20	2.5*25	M6
M73WR-200	200m	207-219	257	120	12.5*20	2.5*25	M6

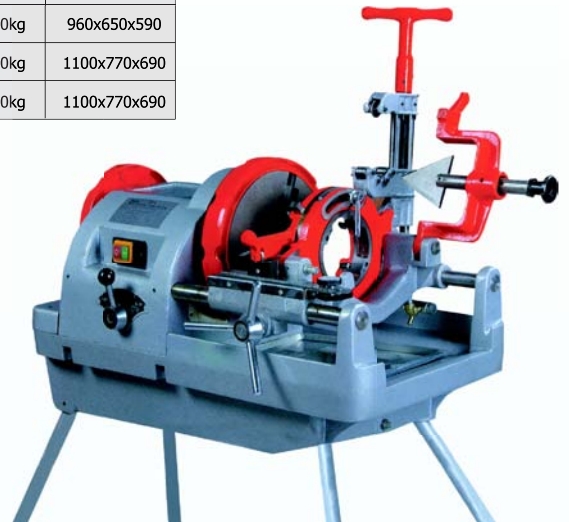
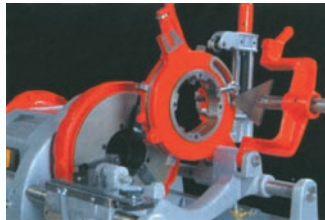
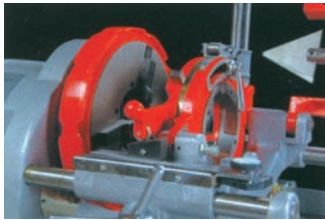
“STEP UP IN TECHNOLOGY, STEP DOWN IN COST”

## TWT

Major Specification

### Pipe Threading Machine

Model	Capacity	Voltage	Motor Power	Speed	G.W / N.W	Dimensions
TWT - I	1/2"~2"	220V/380V	750W	28RPM	90kg/68kg	750x550x580
TWT - II	1/2"~3"	220V/380V	750W	19/27RPM	150kg/110kg	960x650x590
TWT - III	1/2"~4"	220V/380V	750W	8.5/24RPM	220kg/170kg	1100x770x690
TWT - IV	2 1/2"~6"	220V/380V	1100W	5/17.5RPM	250kg/200kg	1100x770x690



## TWQ-III

### PIPE CUTTING MACHINE

#### CAPACITY

Pipe Diameter (mm)	2 1/2~12"
Max. Wall-thickness(mm)	10
Output RPM (r/min)	23

#### Single-phase Motor

Voltage (V)	110~240
Power (W)	750
Frequency (Hz)	50~60
Net weight (Kg)	120
Dimension (mm)	660 x 710 x 960

#### Three-phase Motor

Voltage (V)	110 ~ 460
Power (W)	750
Frequency (Hz)	50 ~ 60
Net weight (Kg)	120
Dimension (mm)	660 x 710 x 960

- The whole construction allows quick change of cutting scope
- The cutting scope while using supporting roller on cam holder: 2 1/2"~6"
- The cutting scope while using supporting roller on main unit: 8'~12"



“STEP UP IN TECHNOLOGY, STEP DOWN IN COST”

## TWG-IVA

### GROOVING MACHINE

#### CAPACITY

Pipe Diameter (mm)	8"~24"
Max. Wall-thickness(mm)	12
Output RPM (r/min)	14

#### Single-phase Motor

Voltage (V)	110~240
Power (W)	2200
Frequency (Hz)	50~60
Net weight (Kg)	264
Dimension (mm)	1080 x 900 x 1450

#### Three-phase Motor

Voltage (V)	110 ~ 460
Power (W)	1500
Frequency (Hz)	50 ~ 60
Net weight (Kg)	254
Dimension (mm)	1080 x 900 x 1450



## TWG-IIA

### GROOVING MACHINE

#### CAPACITY

Pipe Diameter (mm)	2"~12"
Max. Wall-thickness(mm)	10
Output RPM (r/min)	23

#### Single-phase Motor

Voltage (V)	110~240
Power (W)	1100
Frequency (Hz)	50~60
Net weight (Kg)	129
Dimension (mm)	920 x 460 x 960

#### Three-phase Motor

Voltage (V)	110 ~ 460
Power (W)	750
Frequency (Hz)	50 ~ 60
Net weight (Kg)	123
Dimension (mm)	860 - 460 - 860



- This machine is applicable for channeling of zinc-plated pipes.
- Seamless pipes, stainless steel pipes and plastic-lined pipes

# MERIT

“ STEP UP IN TECHNOLOGY, STEP DOWN IN COST ”



Manufactured By :

**MERIT FIRE AND POWER PIPING SYSTEMS PVT. LTD.**

2nd Floor, Panthiyil Ambady

Warriam Road,

Cochin- 682 016 - INDIA

Tel No. +91 484 4016900

Fax No. +91 484 4064800

Email: meritfire@yahoo.com

Distributed by: